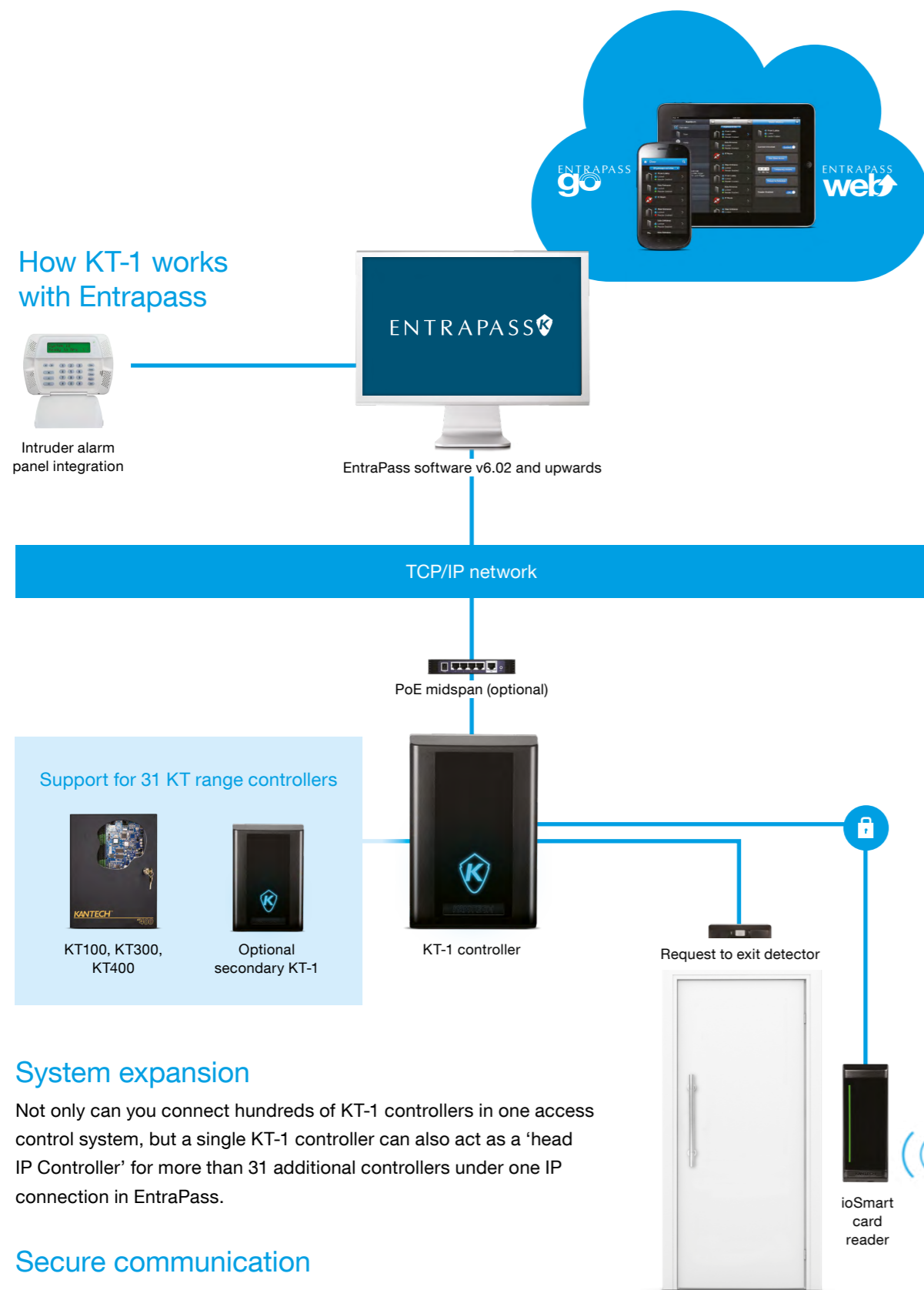


How KT-1 works with Entrapass



System expansion

Not only can you connect hundreds of KT-1 controllers in one access control system, but a single KT-1 controller can also act as a 'head IP Controller' for more than 31 additional controllers under one IP connection in Entrapass.

Secure communication

Using Kantech's ioSmart card readers and cards, KT-1 provides highly secure encryption measures using AES 128-bit encryption between the ioSmart card and ioSmart reader and secure RS-485 communication between the ioSmart reader and the KT-1 controller.

Key features

- One door IP controller
- Two configuration modes:
 - Standalone Mode using a web browser
 - Entrapass Security Management Software
- Capacitive touch button programming using Entrapass
- Plug & play installation
- Power over Ethernet (PoE)
- LED status indicators
- Highly secure 128-bit AES encryption
- End-to-end encryption using Kantech's ioSmart reader and smart cards

KANTECH
From Tyco Security Products

1.800.507.6268 Toll-free in the US and Canada
kantechsales@tycoint.com
www.kantech.com

© 2017 Tyco Security Products. All rights reserved.

KT1



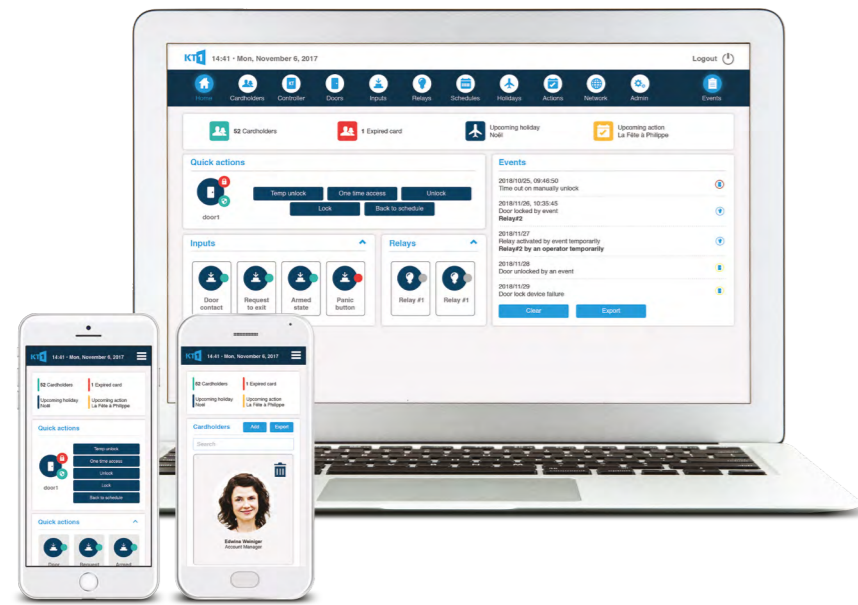
ONE DOOR. MULTIPLE BENEFITS.
SECURITY SIMPLIFIED.



KT1 Standalone

One door, web-based access control

With a built-in, embedded web server, the KT-1 Controller can operate in a cost-effective Standalone Mode. Simply configure and manage your one door access control solution using a dedicated web browser on a desktop or mobile device - **No EntraPass software is required.**



Web based software

Highly intuitive and responsive web based software enables you to manage your one door security from anywhere, using a desktop or mobile device.



Plug & play

Simply power up KT-1; connect to a web browser; follow the quick set-up configuration wizard and your one door security is up and running in minutes.



No training/certification

As the KT-1 hardware and standalone software set-up is highly intuitive, no dealer training or certification is therefore required.

1 DOOR. 2 CONFIGURATIONS.

The Ethernet ready one door controller

The innovative KT-1 controller from Kantech can be configured in two user friendly operational modes. KT-1's Standalone Mode offers basic one door security using a simple web browser. Alternatively KT-1 can be used with the renowned EntraPass Security Management Software to provide a more advanced, fully scalable access control solution.



One door controller

KT-1 is a cost-effective, yet feature rich one door IP controller, supporting two readers (IN/OUT). Featuring an Ethernet port for direct network connection and a removable terminal clip, KT-1 offers the ultimate experience in access control installation.



Power over Ethernet (PoE)

KT-1 has flexible power input including support for Power over Ethernet & PoE+ technology. Using a single Ethernet cable, KT-1 connects directly from an Ethernet PoE-injector. This eliminates the requirement for a local mains power supply at the door, offering installation cost savings.

KT1

EntraPass Security Software

When used in conjunction with the powerful EntraPass Security Management Software, KT-1 provides advanced, fully integrated access control features.

A single KT-1 Controller can control one door or can act as a 'head IP controller', linking together 31 additional controllers in EntraPass – offering a fully scalable access control solution that can grow with your needs.



One touch set-up*

No need to manually enter MAC/serial numbers. KT-1 can be configured via a single capacitive touch button in minutes. Simply provide an IP connection, press a button and you're done. Single button programming means the KT-1 is automatically detected and enrolled onto EntraPass.



Intrusion integration

KT-1 connects directly to intruder alarm panels enabling assigned users to arm and disarm alarms via the access control system. The EntraPass virtual keypad functionality also enables end users to remotely administer intruder panels.



Remote mobile access

KT-1 is also compatible with the innovative EntraPass Web and EntraPass Go mobile applications for remote, convenient access. Admin users can securely connect via the web or a dedicated app on their smart phone/tablet and manage common security tasks wherever they are.